

# Exchangeable lower plates for temperature module

Cornelia Küchenmeister and Jint Nijman, Thermo Fisher Scientific, Process Instruments, Karlsruhe, Germany

## Keywords:

- Thermo Scientific HAAKE MARS
- Lower measuring plate
- Disposable measuring geometry
- Optimized sample filling

For cone / plate as well as plate / plate measuring geometries it is important that the effective diameter of the lower plate matches the diameter of the upper plate in order to achieve correct measurement results.

For the HAAKE MARS III temperature modules matching lower plates are available for all upper plates and cones (diameters 8 to 60 mm). The standard plates are made out of stainless steel. Inexpensive disposable plates made out of aluminium, as well as plates with different surfaces (smooth, serrated, sand blasted) are available also. Customized versions are available on request.

All exchangeable lower plates have a maximal thickness of 3 mm only which results in a very low thermal mass, thereby a quick response to temperature changes is guaranteed.

Mounting and dismounting the exchangeable plate is a matter of seconds only: The plate is placed on top of the temperature module while aligning the marker on the plate with the notch on the temperature module (see fig. 1). With a bayonet ring the plate is then securely fixed to the temperature module.

This design guarantees a perfect mechanical alignment and parallelism.

All lower plates, apart from the plates with diameter 60 mm, have an integrated outer solvent trap when used with one of the sample hoods (fig. 2).

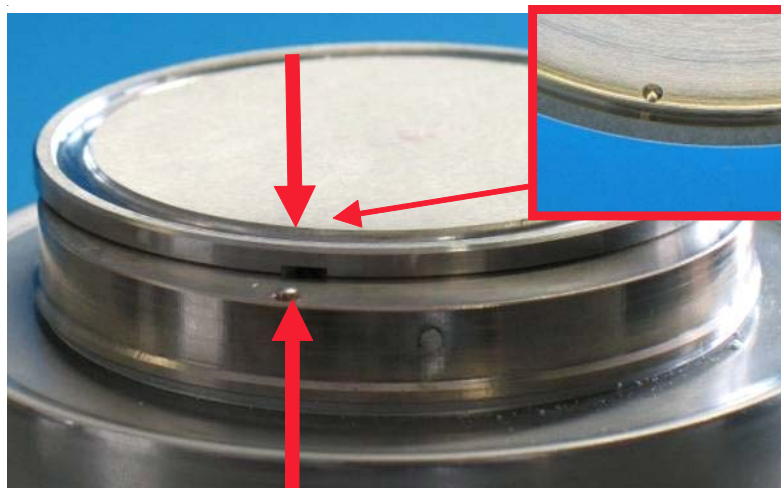


Fig. 1: Mounting of a lower plate TMP on top of a temperature module: temperature module with notch and TMP with marker (bayonet ring for fixing not shown here)



Fig. 2: Temperature module with plate / plate measuring geometry and one half of a sample hood (made of POM: 222-1903) with integrated solvent trap

## Order information for lower plates TMP for temperature modules

222-1891	TMP60 (D = 60 mm), stainless steel, 1 pc	222-1895	TMP35 S (D = 35 mm), serrated surface, stainless steel, 1 pc
222-1892	TMP35 (D = 35 mm), stainless steel, 1 pc	222-1924	TMP20 Alu (D = 20 mm), disposable version, aluminium, 100 pcs
222-1893	TMP20 (D = 20 mm), stainless steel, 1 pc	222-1926	TMP35 Alu (D = 35 mm), disposable version, aluminium, 100 pcs
222-1896	TMP20 S (D = 20 mm), serrated surface, stainless steel, 1 pc	222-1910	TMP60 Alu (D = 60 mm), disposable version, aluminium, 100 pcs

## Process Instruments

### International/Germany

Dieselstr. 4,  
76227 Karlsruhe  
Tel. +49(0)721 40 94-444  
info.mc.de@thermofisher.com

### Benelux

Tel. +31 (0) 76 5 87 98 88  
info.mc.nl@thermofisher.com

### China

Tel. +86 (21) 68 65 45 88  
info.mc.china@thermofisher.com

### France

Tel. +33 (0) 1 60 92 48 00  
info.mc.fr@thermofisher.com

### India

Tel. +91 (20) 66 26 7000  
info.mc.in@thermofisher.com

### United Kingdom

Tel. +44 (0) 1606 54 81 00  
info.mc.uk@thermofisher.com

### USA

Tel. 603 436 9444  
info.mc.us@thermofisher.com

[www.thermo.com/mc](http://www.thermo.com/mc)

P029\_01.08.09

© 2009 Thermo Fisher Scientific Inc.  
All rights reserved. This document is  
for informational purposes only and is  
subject to change without notice.